

www.tmanco.cloud

How to map a Windows drive to your oneCloud folder

TABLE OF CONTENTS

1	How to map a drive to owncloud root	2
1.1	Login to your ownCloud account	2
1.2	Copy your WebDAV address	2
1.3	Open Windows Explorer and select “Map network drive”	2
1.4	Map Network Drive	2
1.5	Enter your ownCloud credentials	3
2	Special considerations	4
2.1	Map drive to a folder or subfolder	4
2.2	Map multiple drives	4
2.3	Change the ownCloud account	4
	2.3.1 Start Credential Manager	5
	2.3.2 Look for “tmanco.cloud”	5
	2.3.3 Now ready to map to a different ownCloud account	6

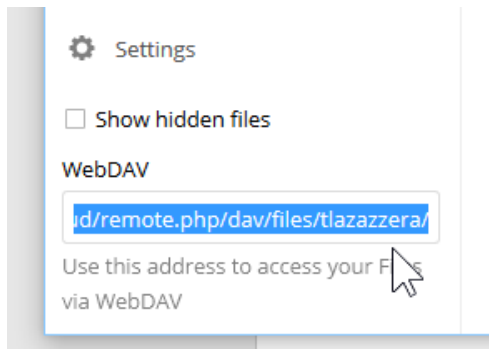
1 HOW TO MAP A DRIVE TO OWNCLOUD ROOT

1.1 Login to your ownCloud account

- Go to <https://tmanco.cloud> and login with your username/passwor

1.2 Copy your WebDAV address

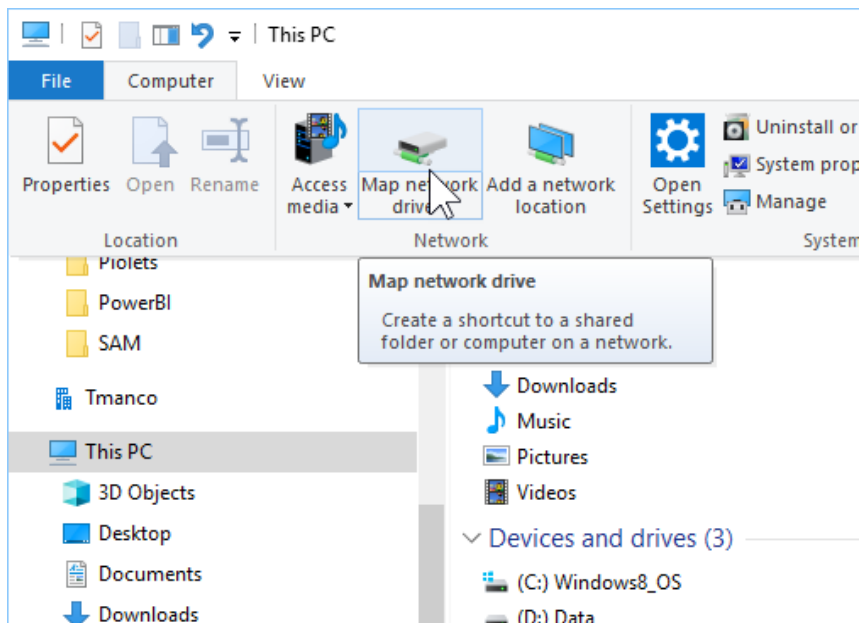
- Click “Settings”
- Click on the WebDAV address and copy (Ctrl-C)



The address looks like <https://tmanco.cloud/remote.php/dav/files/tlazazera/>

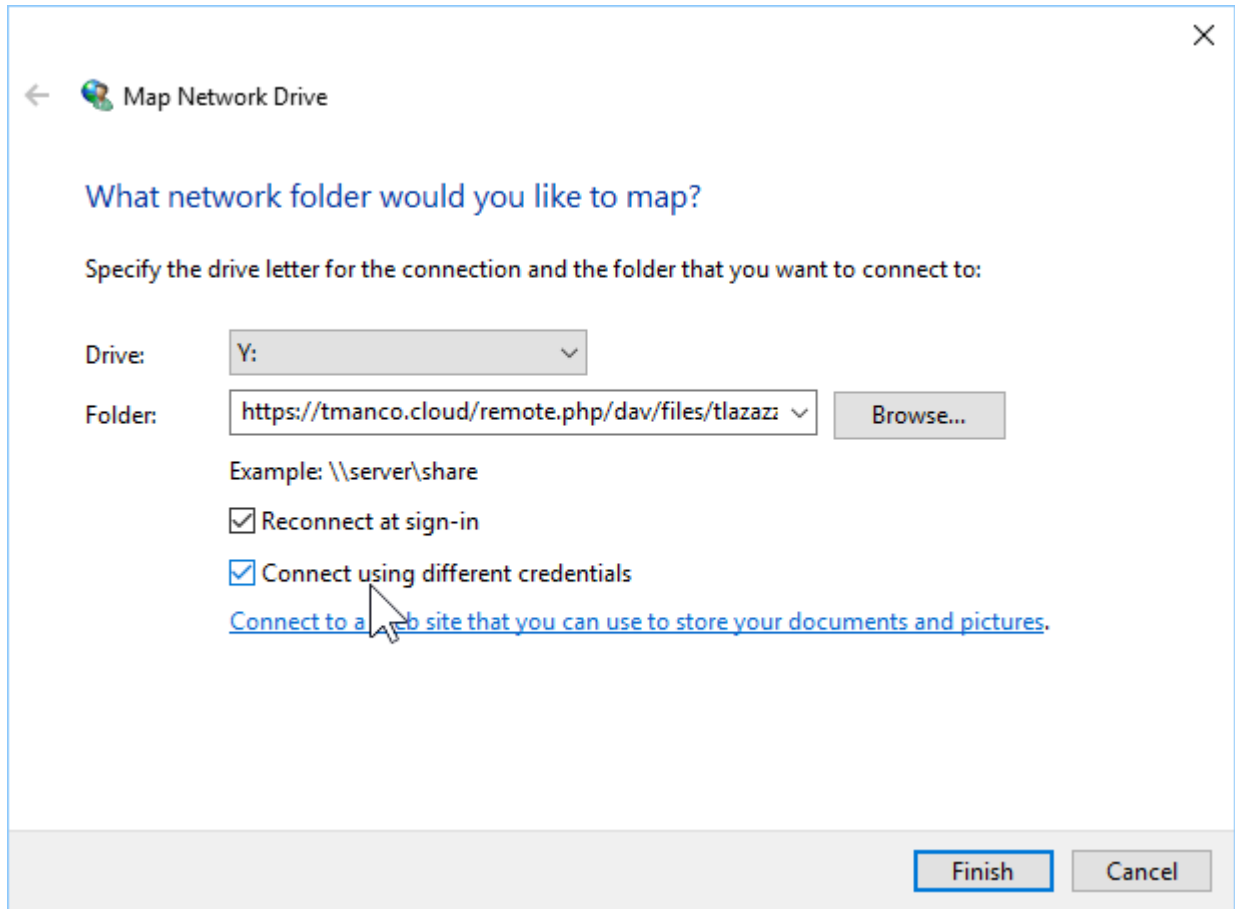
1.3 Open Windows Explorer and select “Map network drive”

- Select “This PC” then “Computer” then “Map network drive”



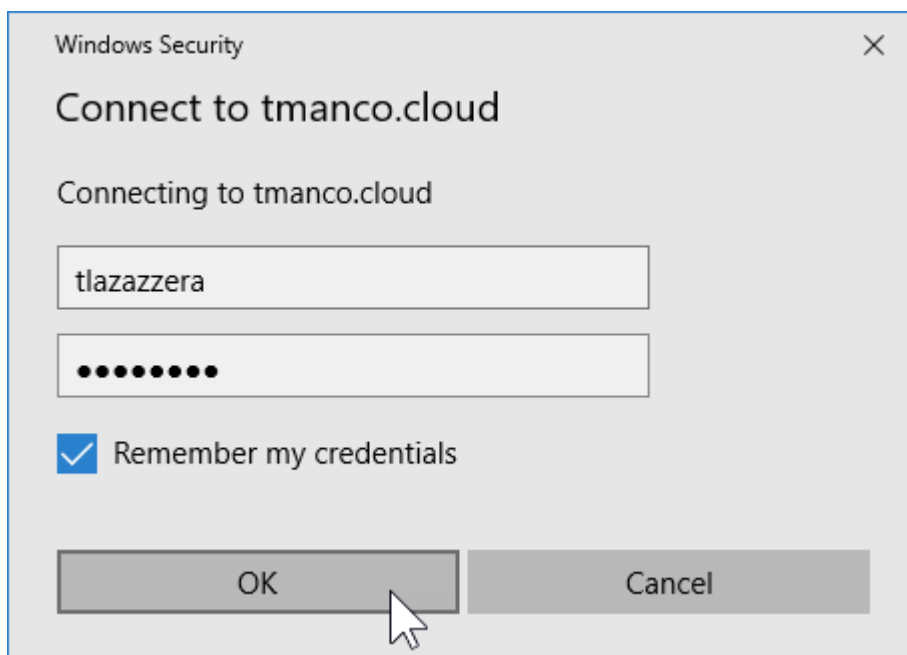
1.4 Map Network Drive

- Select a free drive letter to map
- Paste your WebDAV in the “Folder” field
- Check the box “Connect using different credentials”
- Click “Finish”



1.5 Enter your ownCloud credentials

- Enter your username/login
- Check the box "Remember my credentials"



2 SPECIAL CONSIDERATIONS

2.1 Map drive to a folder or subfolder

When you paste the WebDAV address, you map the drive to the root of your ownCloud folder. But you can also map a drive to a folder or to a subfolder.

Let's assume you have the following structure

```
|
+---Project1
|   \---gerda
|       +---odbc
|       \---xlvba
|           +---input
|           +---main
|           +---output
|           \---tools
\---Project2
    \---presentations
```

- To map a drive to the root the url is:
<https://tmanco.cloud/remote.php/dav/files/tlazazzera/>
- To map a drive to the folder Project1, your url becomes (notice the slash at the end)
<https://tmanco.cloud/remote.php/dav/files/tlazazzera/Project1/>
- To map a drive to the subfolder gerda, your url becomes
<https://tmanco.cloud/remote.php/dav/files/tlazazzera/Project1/gerda/>

2.2 Map multiple drives

You can also map different drives to different folders/subfolders of your ownCloud account.

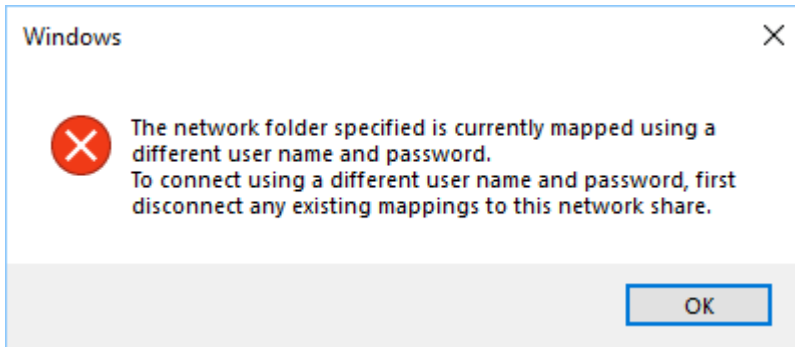
After you have mapped the first drive and entered your credentials, then Windows doesn't ask for the credentials anymore when you map the other drives.

It looks as if Windows keeps only 1 credential for ownCloud, the consequence is that you can not map different drivers to different ownCloud accounts.

2.3 Change the ownCloud account

If you mapped a drive to an ownCloud account and you checked the box "Remember my credentials" then Windows will remember these credentials even if you remove the mapping by doing a "Right-click / Disconnect".

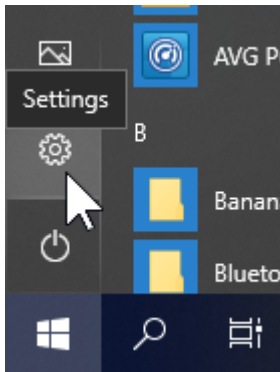
If you try to map a drive to a different ownCloud you then get the following error and this error appears even if you disconnected any existing mapping.



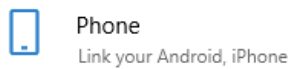
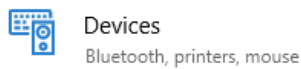
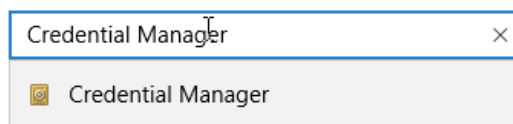
In this case, you need to clear the credentials first by doing the following:

2.3.1 Start Credential Manager

- Run Windows Settings
- In the search box, type “Credential Manager”

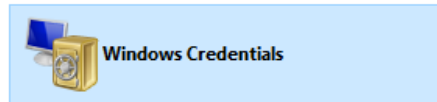


Windows Settings



2.3.2 Look for “tmanco.cloud”

- Select the tab “Windows Credentials”
- Scroll down to the section “Generic Credentials”
- Find the record “tmanco.cloud”
- Click on the arrow at the right
- Click on “Remove” and confirm to remove



[Back up Credentials](#) [Restore Credentials](#)

Generic Credentials	Add a generic credential
192.168.1.34	Modified: 10.10.2017
autodiscover-s.outlook.com	Modified: 04.06.2018
MS.Outlook.15:toni.lazazzera@tmanco.ch	Modified: 21.04.2014
tmanco.cloud	Modified: Today
Internet or network address: tmanco.cloud	
User name: rdonati	
Password:	
Persistence: Enterprise	
Edit Remove	
AdwordsEdito Auth/V2/tlazazzera@gmail.com	Modified: 14.06.2016

2.3.3 Now ready to map to a different ownCloud account